

FM-1200ST-97

MULTIPROFILE ROLL FORMER MACHINE



For Residential and
Comercial Construction

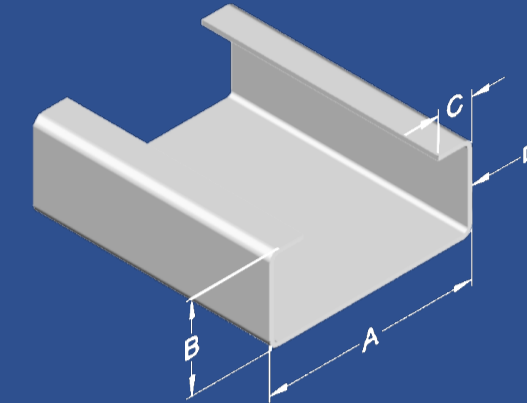
OVERVIEW

- Adjustable Machine to produce a variety of galvanized STUDS/TRACKS to be used on FRAMEMAX steel framing system.
- Automatic setup for profile sizes/thickness, just enter the data into controller and press the AUTO MODE button, then the rollers will automatically adjust.
- Machine takes 5-7 minutes or so to make the adjustments.
- Automatic cut-to-length system
- Automatic punching system
- Maximum Speed 25 m/min [82 ft./min]

COMPONENTS

- Hydraulic expanded decoiler @ 6 tons capacity. (Includes pressing arm)
- Roll former bed with 16 forming stations > Pre-Cut system > Flat-Steel punching > Automatic cut-to-length system > Automatic punching system
- Fully automatic controller with PLC to control length, punching positions and quantities
- Runout table @ 9.0 M long [29.5 ft long]

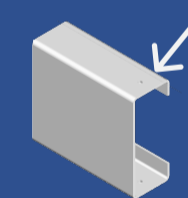
FRAME MAX[®] PROFILE SPECIFICATIONS



Profile Specifications

A. Web	90 - 310 mm (3.50 - 12.00 in)
B. Flange	40 - 100 mm (1.57 - 3.93 in)
C. Lip	12 - 19 mm (0.47 - 0.74 in)
D. Gauges	1.0 - 2.7 mm (20 - 12)

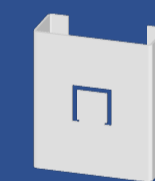
PUNCHING TOOLS



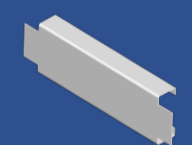
SCREW
HOLE



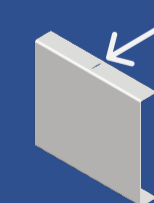
SERVICE
HOLE



CRC



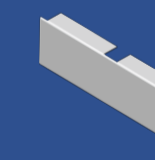
HEADER/
BLOCK



SLOT



BIG SERVICE
HOLE



SNAKE

